

Appendix F

**BORING LOGS AND
BORING LOCATIONS**



MEMORANDUM

TO: File **DATE:** December 20, 2004
FROM: John M. Watson, P.E. **JOB #:** 03187.100
RE: Camarda/Farrington/Rt 6
 Preliminary Soil Testing
 Descriptions

COMMENTS

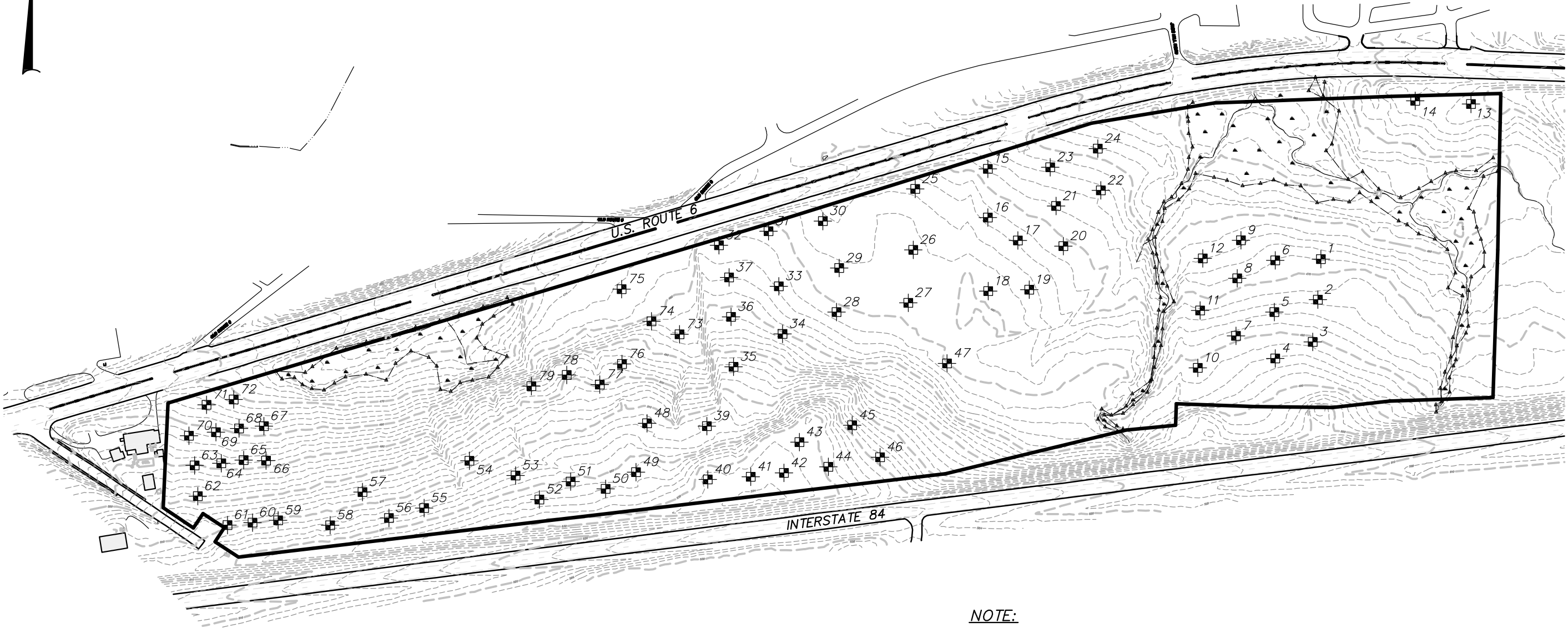
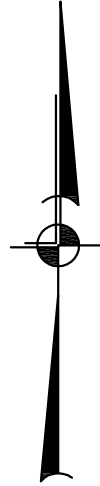
The following is a summary of the preliminary deep test holes as observed by Paul Occhiogrosso and Michelle Micoli (Insite Engineering) on December 10, & 13 2004. Note, groundwater elevations were observed the same day that the test holes were opened. Stabilized groundwater elevations are most likely higher than observed on the day they were opened.

Deep Test Hole No.	Soil Description
D1:	0" to 6" topsoil, 6" to 84+" Fine Sandy Silt, No Rock or Groundwater
D2:	0" to 6" topsoil, 6" to 84+" Fine Sandy Silt, No Rock or Groundwater"
D3:	0" to 6" topsoil, 6" to 84+" Fine Sandy Silt, No rock, Groundwater at 84"
D4:	0" to 6" topsoil, 6" to 84+" Fine Sandy Silt, No rock, Groundwater at 78"
D5:	0" to 6" topsoil, 6" to 84+" Fine Sandy Silt, No rock, Groundwater at 78"
D6:	0" to 6" topsoil, 6" to 84+" Fine Sand and Gravel, No rock or Groundwater
D7:	0" to 6" topsoil, 6" to 84+" Fine Sandy Silt, No Rock, Groundwater at 78"
D8:	0" to 6" topsoil, 6" to 84+" Fine Sandy Silt and Gravel, No rock or Groundwater
D9:	0" to 6" topsoil, 6" to 84+" Fine Sand, No Rock or No Groundwater
D10:	0" to 6" topsoil, 6" to 84+" Slightly Compacted Fine Sandy Silt and Gravel, No Rock, Groundwater seep at 12"
D11:	0" to 6" topsoil, 6" to 84+" Fine Sandy Silt and Gravel, No Rock or Groundwater
D12:	0" to 6" topsoil, 6" to 84+" Fine Sandy Silt and Gravel, No Rock or Groundwater

D13:	0" to 6" topsoil, 6" to 84+" Fine Sand, No Rock or Groundwater
D14:	0" to 6" topsoil, 6" to 84+" Fine Sand, No Rock or Groundwater
D15:	0" to 6" topsoil, 6" to 78" Slightly Compacted Sandy Silt and Gravel, Rock at 78", No Groundwater
D16:	0" to 6" topsoil, 6" to 60" Slightly Compacted Sandy Silt and Gravel, Rock at 60", No Groundwater
D17:	0" to 6" topsoil, 6" to 84+" Fine Sand and Gravel, No Rock or Groundwater
D18:	0" to 6" topsoil, 6" to 84+" Fine Sand and Gravel, No Rock or Groundwater
D19:	0" to 6" topsoil, 6" to 84+" Fine Sand and Gravel, No Rock or Groundwater
D20:	0" to 6" topsoil, 6" to 72" Moderately Compacted Fine Sand and Gravel, Rock at 72" No Groundwater
D21:	0" to 6" topsoil, 6" to 72" Moderately Compacted Fine Sand and Gravel, Rock at 72" Groundwater seep at 12"
D22:	0" to 6" topsoil, 6" to 72" Slightly Compacted Fine Sand and Gravel, Rock at 72" No Groundwater
D23:	0" to 6" topsoil, 6" to 72" Slightly Compacted Fine Sand and Gravel, Rock at 72" No Groundwater, possible spot mottling at 36"
D24:	0" to 6" topsoil, 6" to 84+" Fine Sand and Gravel, No Rock , Groundwater at 72"
D25:	0" to 6" topsoil, 6" to 72" Slightly Compacted Fine Sand, Rock at 72", No Groundwater
D26:	0" to 6" topsoil, 6" to 84+" Slightly Compacted Fine Sand and Gravel, No Rock or Groundwater, possible spot mottling at 42"
D27:	0" to 6" topsoil, 6" to 84+" Slightly Compacted Fine Sand and Gravel, No Rock or Groundwater, possible spot mottling at 42"
D28:	0" to 6" topsoil, 6" to 84+" Slightly Compacted Fine Sand and Gravel, No Rock or Groundwater, possible spot mottling at 42"
D29:	0" to 6" topsoil, 6" to 84+" Slightly Compacted Fine Sand and Gravel, No Rock or Groundwater, possible spot mottling at 42"
D30:	0" to 6" topsoil, 6" to 84+" Slightly Compacted Fine Sand and Gravel, No Rock or Groundwater, possible spot mottling at 42"
D31:	0" to 6" topsoil, 6" to 36" Red brown Fine Sand, 36" to 60" Orange brown Fine Sand, Rock at 60", No Groundwater, possible spot mottling at 42"
D32:	0" to 6" topsoil, 6" to 84+" Slightly Compacted Fine Sand and Gravel, No Rock or Groundwater, possible spot mottling at 42"
D33:	0" to 6" topsoil, 6" to 84+" Slightly Compacted Fine Sand and Gravel, No Rock or Groundwater, possible spot mottling at 42"
D34:	0" to 6" topsoil, 6" to 84+" Compacted Moist Sand and Gravel, No Rock or Groundwater, possible spot mottling at 42"

D35:	0" to 6" topsoil, 6" to 84+" Compacted Moist Sand and Gravel, No Rock, Groundwater at 78" , possible spot mottling at 42"
D36:	0" to 6" topsoil, 6" to 84+" Slightly Compacted Fine Sand, No Rock or Groundwater possible spot mottling at 42"
D37:	0" to 6" topsoil, 6" to 84+" Slightly Compacted Fine Sand, No Rock or Groundwater possible spot mottling at 42"
D38:	Michelle didn't feel D38 was necessary!
D39:	0" to 12" topsoil, 12" to 84+" Moderately Compacted Moist Sandy Silt, No Rock or Groundwater, spot mottling at 42"
D40:	0" to 12" topsoil, 12" to 78" Moderately Compacted Sandy Silt, Rock at 78" No Groundwater, spot mottling at 42"
D41:	0" to 12" topsoil, 12" to 42" Dark Brown Sandy Silt, 42" to 84" Brown Sandy Silt, No Rock or Groundwater, mottling throughout
D42:	0" to 12" topsoil, 12" to 42" Dark Brown Sandy Silt, 42" to 84" Brown Sandy Silt, No Rock or Groundwater, mottling throughout
D43:	0" to 12" topsoil, 12" to 36" Reddish Brown Fine Sandy Silt, 36" to 84" Compacted Light Brown Sandy Silt, No Rock or Groundwater
D44:	0" to 12" topsoil, 12" to 72" Compact Olive Brown Sandy Silt, Rock at 72" , No Groundwater
D45:	0" to 12" topsoil, 12" to 78" Compact moist Brown Sandy Silt, Rock" , Groundwater at 78"
D46:	0" to 12" topsoil, 12" to 72" Compact moist Brown Sandy Silt, Rock" , Groundwater at 72"
D47:	0" to 12" topsoil, 12" to 84+" Very Fine Sandy Silt, No Rock , Groundwater at 84"
D48:	0" to 12" topsoil, 12" to 84+" Sandy Silt some Rock, mottled throughout, No Groundwater
D49:	0" to 12" topsoil, 12" to 84+" Brown Sandy Silt, No Rock or Groundwater
D50:	Ledge at 2.5'
D51:	0" to 12" topsoil, 12" to 72" Compact Sandy Silt, No Rock or Groundwater
D52:	0" to 12" topsoil, 12" to 72" Compact moist Brown Sandy Silt, Rock at 72" , mottled throughout
D53:	0" to 12" topsoil, 12" to 84+" Compact Sandy Silt, No Rock or Groundwater, mottled throughout
D54:	0" to 12" topsoil, 12" to 84+" Compact Sandy Silt, No Rock or Groundwater, mottling at 48"
D55:	0" to 12" topsoil, 12" to 84+" Compact Sandy Silt, No Rock or Groundwater at 84" , mottling at 78"
D56:	0" to 12" topsoil, 12" to 84+" Compact Sandy Silt, No Rock or Groundwater, mottling at 24"
D57:	0" to 12" topsoil, 12" to 84+" Dark Brown Compact moist Sandy Silt, Rock" , mottling at bottom
D58:	0" to 12" topsoil, 12" to 84+" Compact Sandy Silt, No Rock or Groundwater
D59:	0" to 12" topsoil, 12" to 84+" Very Compact Sandy Silt, No Rock or Groundwater
D60:	0" to 12" topsoil, 12" to 84+" Compact Sandy Silt, No Rock or Groundwater

D61:	0" to 12" topsoil, 12" to 84+" Slightly Compact Sandy Silt, No Rock or Groundwater, spot mottled
D62:	0" to 12" topsoil, 12" to 84+" Slightly Compact Sandy Silt, No Rock or Groundwater, spot mottled throughout
D63:	0" to 12" topsoil, 12" to 84+" Slightly Compact Sandy Silt, No Rock or Groundwater
D64:	0" to 12" topsoil, 12" to 72" Moist Sandy Silt, No Rock, Groundwater at 72"
D65:	0" to 12" topsoil, 12" to 60" Sandy Soil, Rock and Groundwater 60"
D66:	0" to 12" topsoil, 12" to 84+" Sandy Silt, No Rock, Groundwater at 84"
D67:	0" to 12" topsoil, 12" to 84+" Sandy Silt, No Rock, Groundwater at 84"
D68:	0" to 12" topsoil, 12" to 84+" Sandy Silt, No Rock or Groundwater
D69:	0" to 12" topsoil, 12" to 84+" Sandy Silt, No Rock or Groundwater
D70:	0" to 12" topsoil, 12" to 84+" Sandy Silt, No Rock or Groundwater
D71:	0" to 12" topsoil, 12" to 84+" Sandy Silt, No Rock or Groundwater
D72:	Rock at 24"
D73:	0" to 12" topsoil, 12" to 36" Light Brown Fine Sandy Silt, 36" to 84" Orange Brown Fine Sandy Silt , Rock at 84" No Groundwater, mottling at 24"
D74:	0" to 12" topsoil, 12" to 48" Brown Sandy Silt, Rock at 48", No Groundwater
D75:	Ledge at 24"
D76:	Ledge at 24"
D77:	0" to 12" topsoil, 12" to 78" Brown Sandy Silt, Rock at 78" No Groundwater
D78:	0" to 12" topsoil, 12" to 72" Brown Sandy Silt, Rock at 72" No Groundwater
D79:	0" to 12" topsoil, 12" to 84+" Slightly Compacted Sandy Silt, No Rock or Groundwater, spot mottling



NOTE:
 SEE "PRELIMINARY SOIL TESTING DESCRIPTIONS" DATED
 DECEMBER 20, 2004 FOR SOILS DESCRIPTIONS FOR THE
 PRELIMINARY TEST HOLES SHOWN ON THIS PLAN.

DATE: 12-20-06
 SCALE: 1"=250'
 PROJECT NO.: 03157.100
 FIGURE: DT-1

INSITE
 ENGINEERING, SURVEYING &
 LANDSCAPE ARCHITECTURE, P.C.
 3 Garrett Place • Carmel, New York 10512
 Phone (845) 225-9690 • Fax (845) 225-9717
 www.insite-eng.com

PREPARED BY:

PROJECT: STATELINE RETAIL CENTER
 U.S. ROUTE 6, TOWN OF SOUTHEAST, PUTNAM COUNTY, NEW YORK
 DRAWING: PRELIMINARY
 DEEP TEST LOCATION MAP

